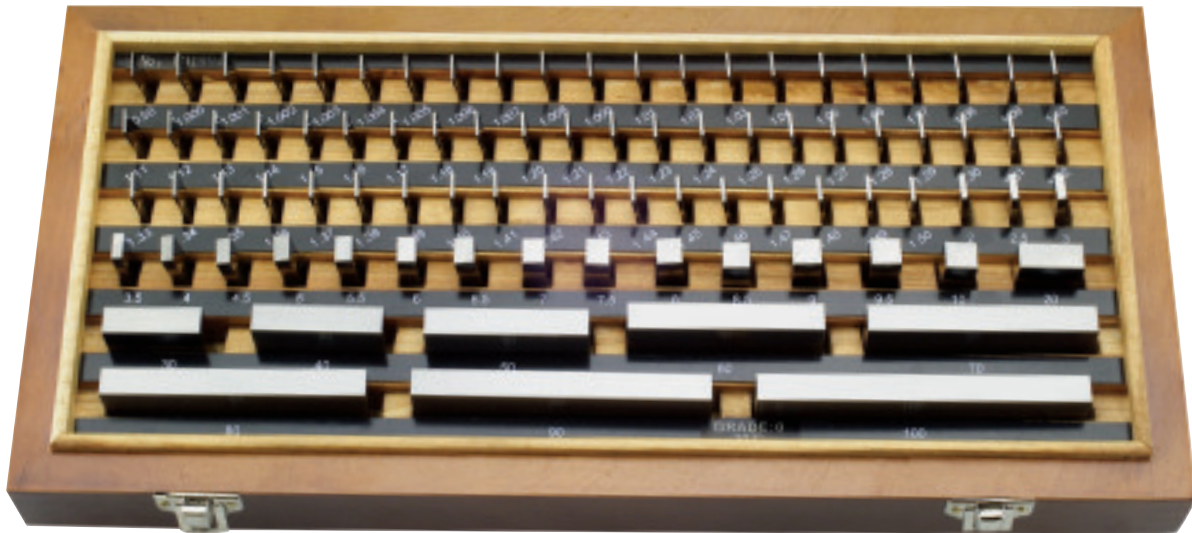


Steel Gauge Blocks 700 Series

Features

- Made from high quality stress relieved alloy steel
- Hardened to HV820 (HRC65)
- Excellent rigidity
- Size and serial number are engraved on each individual gauge block
- Available in 2 grades
 - Grade 1 for Inspection
 - Grade 2 for Workshop
- All sets have a MOORE & WRIGHT certificate
- All sets can be issued with a UKAS certificate at extra cost



BLOCK SET CONFIGURATION

No. blocks	Nominal size	Qty	Step (mm)	No. blocks	Nominal size	Qty	Step (mm)	No. blocks	Nominal size	Qty	Step (mm)	No. blocks	Nominal size	Qty	Step (mm)
103	1.005	1		87	1.001-1.009	9	0.001	47	1.005	1		32	1.005	1	
	1.01-1.49	49	0.01		1.01-1.49	49	0.01		1.01-1.09	9	0.01		1.01-1.09	9	0.01
	0.50-24.50	49	0.5		0.50-9.50	19	0.5		1.10-1.90	9	0.1		1.10-1.90	9	0.1
	25.0-100.0	4	25		10.0-100.0	10	10		1.0-24.0	24	1		1.0-9.0	9	1
									25.0-100.0	4	25		10.0-30.0	3	10
													60.0	1	

STEEL GAUGE BLOCK SETS

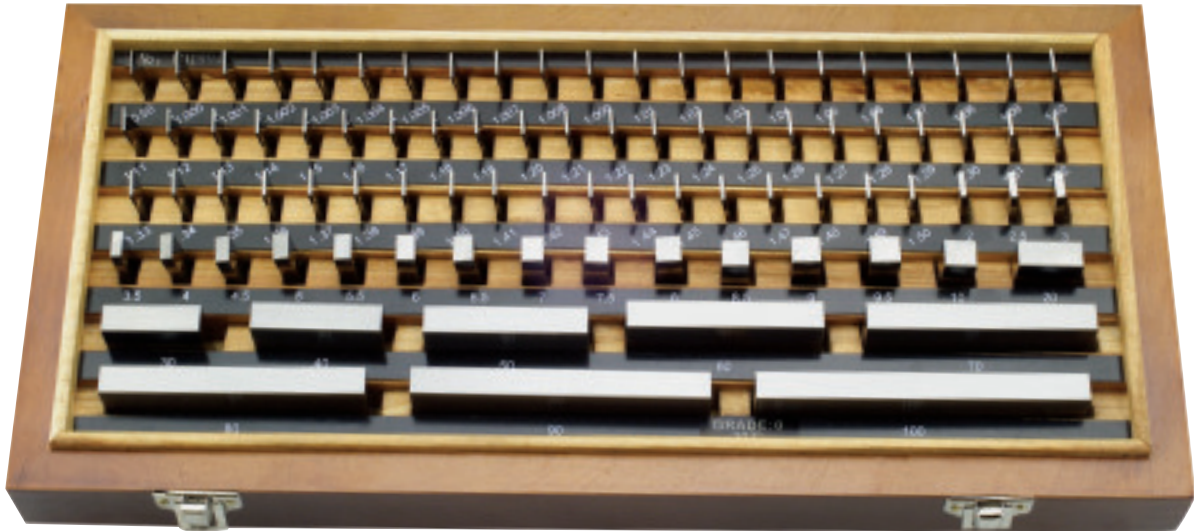
Code No	No. of Blocks	Description
MW700-02	103	Grade 1
MW700-03	103	Grade 2
MW700-05	87	Grade 1
MW700-06	87	Grade 2
MW700-08	47	Grade 1
MW700-09	47	Grade 2
MW700-11	32	Grade 1
MW700-12	32	Grade 2

Carbide Gauge Blocks 710 Series

Features

Standard: DIN 861

- Made from solid carbide with high precision
- Service life is up to 6 times that of steel
- Excellent wringability due to micro polished surfaces
- Every gauge block has its own serial number
- Available in 3 grades
 - Grade 0 for calibration
 - Grade 1 for inspection
 - Grade 2 for workshop
- All sets have MOORE & WRIGHT certificate
- All sets can be issued with UKAS certificate at extra cost



BLOCK SET CONFIGURATION

No. blocks	Nominal size	Qty	Step (mm)	No. blocks	Nominal size	Qty	Step (mm)	No. blocks	Nominal size	Qty	Step (mm)	No. blocks	Nominal size	Qty	Step (mm)
103	1.005	1		87	1.001-1.009	9	0.001	47	1.005	1		32	1.005	1	
	1.01-1.49	49	0.01		1.01-1.49	49	0.01		1.01-1.09	9	0.01		1.01-1.09	9	0.01
	0.50-24.50	49	0.5		0.50-9.50	19	0.5		1.10-1.90	9	0.1		1.10-1.90	9	0.1
	25.0-100.0	4	25		10.0-100.0	10	10		1.0-24.0	24	1		1.0-9.0	9	1
									25.0-100.0	4	25		10.0-30.0	3	10
													60.0	1	

CARBIDE GAUGE BLOCK SETS

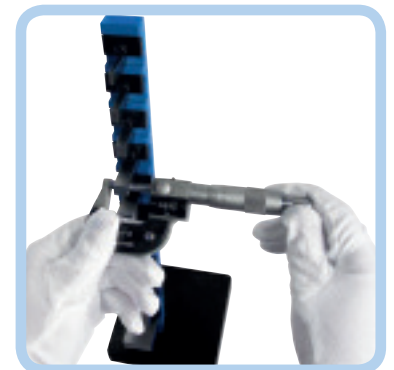
Code No	No. of Blocks	Description
MW710-01	103	Grade 0
MW710-02	103	Grade 1
MW710-03	103	Grade 2
MW710-04	87	Grade 0
MW710-05	87	Grade 1
MW710-06	87	Grade 2
MW710-07	47	Grade 0
MW710-08	47	Grade 1
MW710-09	47	Grade 2
MW710-10	32	Grade 0
MW710-11	32	Grade 1
MW710-12	32	Grade 2

Mic-Check Gauge Block Set MW715 Series

Features

Standard: DIN 861

- For the inspection of Metric Micrometers according to DIN 863
- Inspection Grade: Grade 0
- Nominal Gauge Sizes: 2.5, 5.1, 7.7, 10.3, 12.9, 15.0, 17.6, 20.2, 22.8, 25.0mm
- Optical Flat: 30mm diameter, 12.0mm thick
- Supplied with a stand to conveniently hold the slip gauges
- Can be used horizontally or vertically
- Supplied in a fitted case with a M&W Calibration certificate



MIC-CHECK M10 SET AND STAND

Code No	Description
MW715-01	10 Piece Mic-Check Gauge Block Set plus Optical Flat

Cylinder Bore Gauge Setting Master Kit 720 Series

Features

- Bore Gauge Setting Master Kit for accurately setting any 2 point bore gauge up to 160mm in diameter to an accuracy of 0.01mm
- Setting master and 33 piece metric gauge block set supplied in plastic case

Setting Device

- Internal range 160mm
- Depth range 25mm
- Centraliser width 70mm
- Quick-release holder for fast adjustment

Gauge Block Set

- Accuracy to DIN 861, Grade2
- 33 piece metric steel set
- Supplied in a fitted case with a M&W Calibration certificate



CYLINDER BORE GAUGE SETTING MASTER KIT

Code No	Description
MW720-01	Bore Gauge Setting Master Kit

Steel Pin Gauge Sets

Features

- Standard: Factory Standard
- Boxed sets complete with handle
- Each pin is laser engraved with its size above 1.5mm
- Each pin is stored in its own tube, marked with the pin size
- Pin length 50mm
- Supplied with a certificate of conformity
- Fully hardened to 60/62 HRC
- Manufacturing tolerance +/- .002mm



STEEL PIN GAUGE SETS

Code No	Description	Code No	Description	Code No	Description
MW725-01	Steel Pin Gauge Set 51pce 0.50-1.00x.01mm +/- 0.002mm C/W Handle	MW725-05	Steel Pin Gauge Set 100pce 4.01-5.00x.01mm +/- 0.002mm C/W Handle	MW725-09	Steel Pin Gauge Set 100pce 8.01-9.00x.01mm +/- 0.002mm C/W Handle
MW725-02	Steel Pin Gauge Set 100pce 1.01-2.00x.01mm +/- 0.002mm C/W Handle	MW725-06	Steel Pin Gauge Set 100pce 5.01-6.00x.01mm +/- 0.002mm C/W Handle	MW725-10	Steel Pin Gauge Set 100pce 9.01-10.00x.01mm +/- 0.002mm C/W Handle
MW725-03	Steel Pin Gauge Set 100pce 2.01-3.00x.01mm +/- 0.002mm C/W Handle	MW725-07	Steel Pin Gauge Set 100pce 6.01-7.00x.01mm +/- 0.002mm C/W Handle		
MW725-04	Steel Pin Gauge Set 100pce 3.01-4.00x.01mm +/- 0.002mm C/W Handle	MW725-08	Steel Pin Gauge Set 100pce 7.01-8.00x.01mm +/- 0.002mm C/W Handle		

Traditional Vee Blocks & Clamps

Features

230 General Workshop grade

- Manufactured from close grained cast iron
- Supplied in matched and numbered pairs
- One steel clamp and screw supplied per pair



230

231

VEE BLOCKS & CLAMPS

Code No	Accuracy (mm)	Accuracy (inch)	Range (mm)	Range (inch)	Width (mm)	Width (inch)	Length (mm)	Length (inch)	Height (mm)	Height (inch)
230	0.05	0.020	40	1 1/2	40	1 1/2	50	2	40	1 1/2
231	0.01	0.004	25	1	32	1 1/4	42	1 5/8	32	1 1/4

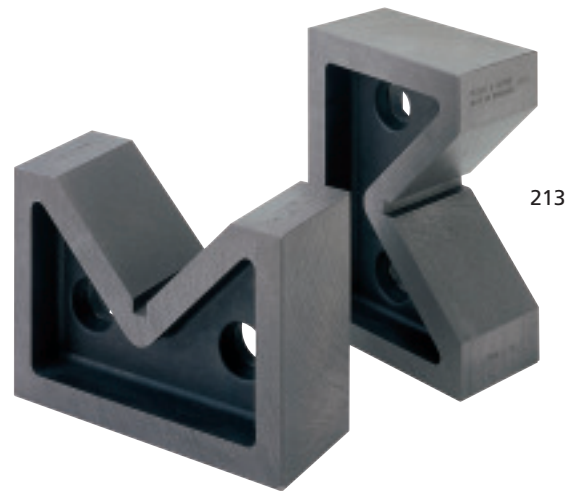
SPARE CLAMPS

Code No	Description
23001	Spare Clamp and Screw for 230
23101	Spare Clamp and Screw for 231

Traditional Vee Blocks Standard Pairs

Features

- Supplied in matched and numbered pairs only
- Manufactured from close grained cast iron
- Ground faces



VEE BLOCKS STANDARD PAIRS

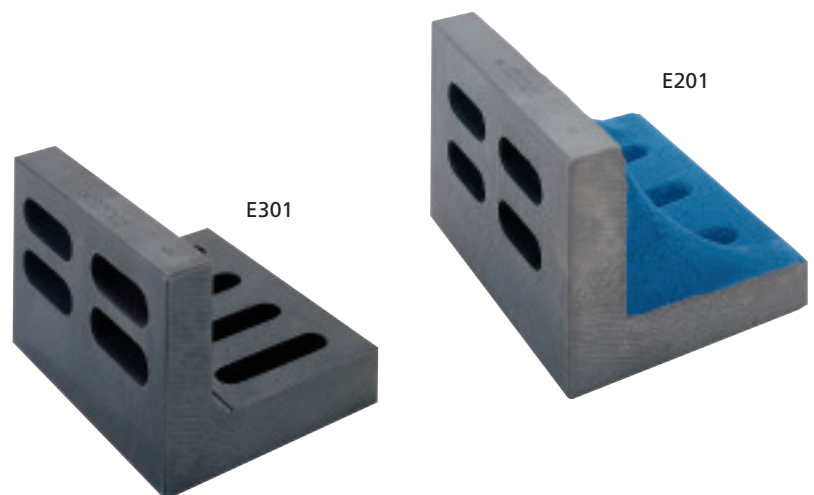
Code No	Accuracy (mm)	Accuracy (inch)	Capacity (mm)	Capacity (inch)	Width (mm)	Width (inch)	Length (mm)	Length (inch)	Height (mm)	Height (inch)
211	0.04	0.0015	63	2.48	80	3.15	35	1.38	60	2.36
212	0.04	0.0015	80	3.15	100	3.94	40	1.57	75	2.95
213	0.05	0.0020	100	3.94	130	5.12	45	1.77	90	3.54
214	0.05	0.0020	125	4.92	150	5.90	50	1.97	100	3.94
215	0.06	0.0025	160	6.30	180	7.09	60	2.36	130	5.12
216	0.06	0.0025	200	7.87	220	8.66	70	2.76	160	6.30

Traditional Angle Plates

Features

Complies with: BS5535 Grade B

- Manufactured from close grained cast iron
- Heat stabilised to prevent distortion
- Machined to tolerance on all four edges and two faces (four faces on open end version)



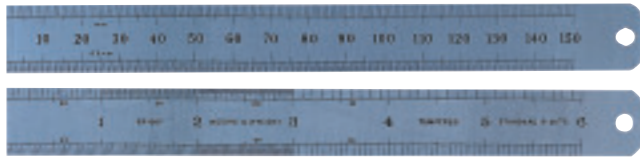
METRIC / IMPERIAL ANGLE PLATES

Code No.	Description	Length (mm)	Length (inch)	Width (mm)	Width (inch)	Height (mm)	Height (inch)
E200	Webbed	100	3.94	60	2.36	80	3.15
E201	Webbed	131	5.15	86	3.38	106	4.17
E202	Webbed	160	6.30	100	3.94	125	4.92
E204	Webbed	200	7.87	125	4.92	160	6.30
E301	Open End	125	4.92	80	3.15	100	3.94
E302	Open End	160	6.30	100	3.94	125	4.92
E304	Open End	200	7.87	125	4.92	160	6.30

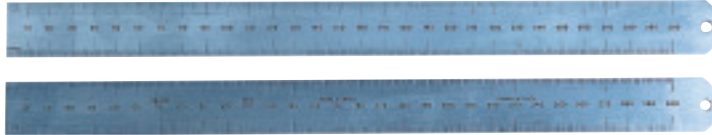
Traditional Engineers' Rules

Features

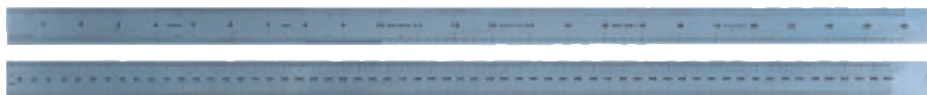
- Made from fine quality steel which has been hardened and tempered to provide the ideal balance between flexibility and durability
- D shaped end with hanging hole
- Satin chrome anti-glare finish
- Permanent black high definition scale markings
- Metric scales front and rear face graduations 0.5mm, 1.0mm
- Metric / Imperial scales front face graduations 1/16th, 1/32nd, 1/64th 1/10th, 1/20th, 1/50th, 1/100th of an inch
- Metric / Imperial scales rear face graduations 0.5mm, 1.0mm



ER106F



ER112



ER424

METRIC SCALES ONLY: Two Sides, Four Edges

Code No	Length (mm)	Width (mm)	Thickness	Pack Quantity
ER306F	150	19	0.4mm	1
ER312	300	25	1.0mm	1

METRIC / IMPERIAL SCALES: Two Sides, Four Edges

Code No	Length (mm)	Length (inch)	Width (mm)	Thickness	Pack Quantity
ER106F	150	6	19.0	0.4mm	1
ER206F	150	6	12.5	0.4mm	1
ER112	300	12	25.0	1.0mm	1
ER212	300	12	12.5	1.0mm	1
ER424	600	24	25.0	1.0mm	1

Telescopic Gauges 315 Series - Sets

Features

- For quick inside measurement and determination of inside diameters
- Spring loaded plunger that expands in the bore or groove
- Satin-chromed body
- With auto extension and direct locking
- Measuring faces are hardened and micro-lapped

Range 8 - 12.7mm
 12.7 - 19mm
 19 - 32mm
 32 - 54mm
 54 - 90mm
 90 - 150mm



TELESCOPIC GAUGE SETS

Code No	Range (mm)	Pack Quantity
MW315-01	8-150	6-pieces

Carbide Tipped Scriber

Features

- Pocket clip
- Pearl-chrome finish
- Robust design



SCT-001XR



SCT-002R

CARBIDE TIPPED SCRIBER

Code No	Description	Note
SCT-001XR	Retail Pack, replaceable carbide tipped scriber	Supplied with spare scriber
SCT-002R	Retail Pack, fixed carbide tipped scriber	