



sylvac

Swiss manufacturer of precision measuring instruments since 1969

# S\_Mike PRO

## New versions

- Knife-shaped anvils 0.75 mm
- Cylindrical anvils Ø 2 mm
- SIS (see technical data)
- Non-rotating spindle
- Tungsten carbide anvils
- Fast movement 12 mm / rotation
- USB output (Proximity)
- Protection rating IP67

S\_Mike PRO KNIFE



S\_Mike PRO DIA 2

**NEW**



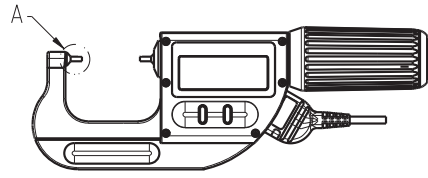
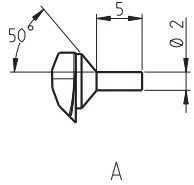


sylvac

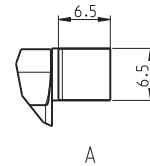
Swiss manufacturer of precision measuring instruments since 1969

# S\_Mike PRO

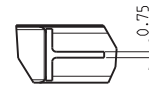
## TECHNICAL DATA



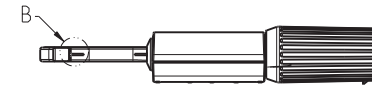
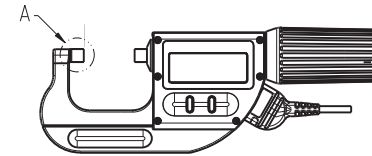
**S\_Mike PRO DIA Ø 2 mm**  
**903.0301**



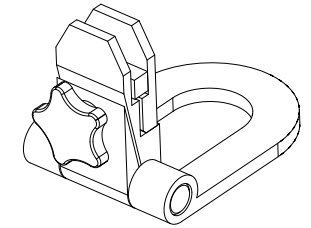
A



B



**S\_Mike PRO KNIFE 0.75 mm**  
**903.0302**



**Stand for S\_Mike**  
**903.0330**

		903.0301	903.0302	903.0601	903.0602	903.1001	903.1002
Measuring range	mm	0-25	0-25	25-60	25-60	60-95	60-95
Max Error G <sup>1)</sup>	µm	3	3	4	4	5	5
Repeatability <sup>2)</sup>	µm	1	1	1	1	1	1
S_Connect : Proximity		USB / RS 232 / Digimatic / Wireless <sup>3)</sup>					
Protection rating according to IEC 60529		IP67 with or without connector					
Setting by PC					●		
Adjustable measuring force		●	●				
Non-rotating spindle					●		
Fast movement					●		
Preset function					●		
SIS = Smart inductive Sensor					●		
Support 903.0330 (optional)					●		

<sup>1)</sup> According to DIN 863

<sup>2)</sup> ± 1 digit

<sup>3)</sup> see cables chapter on sylvac catalog

**SIS** Smart Inductive System

Automatic sleeping mode  
Automatic wake up  
Origin saved